



Flight Plan & Site Survey

Created using **RPAS Wilco**[®]

Operation Name:	Beeton Ronan
Pilot Name:	██████████
Pilot Certificate:	██████████
Flight Start:	December 18, 2023 12:10 PM
Flight End:	December 18, 2023 2:10 PM
Flight Area (Latitude):	44° 2' 32.00" N (44.042)
Flight Area (Longitude):	79° 50' 47.00" W (-79.846)
Altitude - Radius:	Alt: 400 ft - Rad: 926.0 m (0.5 nm)
Airspace:	UNCONTROLLED
FIR - Contact:	CZYZ - 905-676-4509

Please ensure you received all required authorizations prior to flight.

Disclaimer

This Site Survey was created using RPAS Wilco by AIM Robotics. The flight plan contained is intended only for RPAS flights on the date/time and location specified. The user accepts all responsibility for the accuracy and completeness of the information contained.

For the complete Terms & Conditions, see

<https://rpswilco.com/#/tnc>



Included

- Site Survey
- Obstacles (if available)
- Nearby Aerodromes
- Canadian Aviation Regulations
- GFA
- Aerodrome Supplements
 - METAR & TAF (if available)
 - NOTAMS
 - CFS

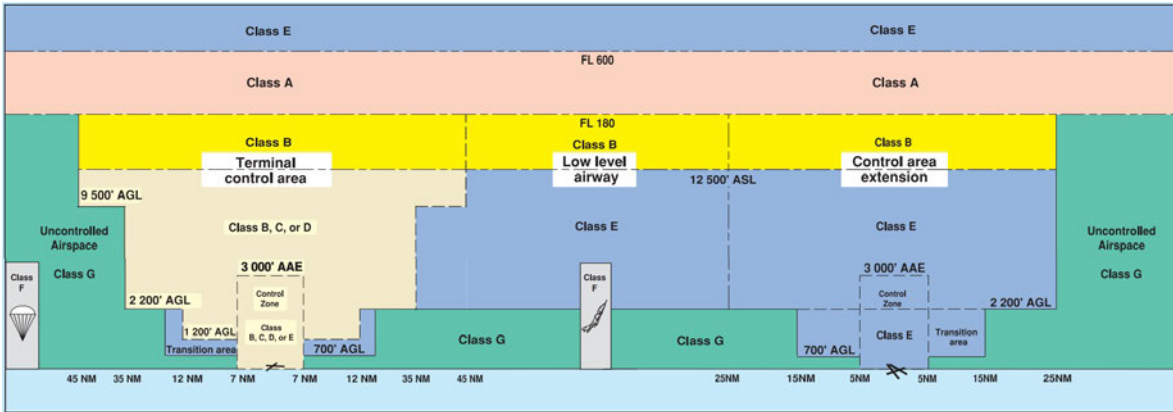
Flight Map



MAP Details

	Latitude	Longitude
 MODEL	44° 2' 32.00" N (44.042)	79° 50' 47.00" W (-79.846)
 Pilot	44° 2' 35.60" N (44.0432)	79° 50' 50.60" W (-79.8474)

Airspace Classification



Overlying Airspaces

Class	Name	Floor	Ceiling
C	Toronto, ON TCA	3500MSL	4500MSL
C	Toronto, ON TCA	4500MSL	12500MSL
E	T614 Airway	2200AGL	12500MSL
B	T614 Airway	12500MSL	18000MSL
E	T616 Airway	2200AGL	12500MSL
B	T616 Airway	12500MSL	18000MSL
B	Southern Ontario Low Level Control Area CAE	12500MSL	18000MSL
E	Southern Ontario Low Level Control Area CAE	2500MSL	6500MSL
E	Southern Ontario Low Level Control Area CAE	6500MSL	12500MSL
E	Toronto XPNDR MANDTRY	6500MSL	12500MSL

Nearest Aerodromes & Distance from Operation

RONAN (CTR3 AERODROME Reg)	Lat: 44.042	Long: 79.846	0.04 KM	0.02 NM
MARDON (CMA6 AERODROME Reg)	Lat: 44.058	Long: 79.88	3.208 KM	1.73 NM
BEETON FIELD (CBF3 AERODROME Reg)	Lat: 44.079	Long: 79.811	4.972 KM	2.68 NM
VOLK (CPM5 AERODROME Reg)	Lat: 43.994	Long: 79.779	7.602 KM	4.1 NM
SCHOMBERG (SLOAN FIELD) (CSV8 AERODROME Reg)	Lat: 43.986	Long: 79.727	11.412 KM	6.16 NM

Canadian Aviation Regulations

Division III — General Operating and Flight Rules

For full listing please visit <https://laws-lois.justice.gc.ca/eng/regulations/SOR-96-433/FullText.html#s-901.27>

Visual Line-of-sight

- **901.11 (1)** Subject to subsection (2) no pilot shall operate a remotely piloted aircraft system unless the pilot or a visual observer has the aircraft in visual line-of-sight at all times during flight.
- **(2)** A pilot may operate a remotely piloted aircraft system without the pilot or a visual observer having the aircraft in visual line-of-sight if the operation is conducted in accordance with a special flight operations certificate — RPAS issued under section 903.03.

Procedures

- **901.23 (1)** No pilot shall operate a remotely piloted aircraft system unless the following procedures are established:
 - **(a)** normal operating procedures, including pre-flight, take-off, launch, approach, landing and recovery procedures; and
 - **(b)** emergency procedures, including with respect to
 - **(i)** a control station failure,
 - **(ii)** an equipment failure,
 - **(iii)** a failure of the remotely piloted aircraft,
 - **(iv)** a loss of the command and control link,
 - **(v)** a fly-away, and
 - **(vi)** flight termination.
- **(2)** If the manufacturer of the remotely piloted aircraft system provides instructions with respect to the topics referred to in paragraphs (1)(a) and (b), the procedures established under subsection (1) shall reflect those instructions.
- **(3)** No pilot shall conduct the take-off or launch of a remotely piloted aircraft unless the procedures referred to in subsection (1) are reviewed before the flight by, and are immediately available to, each crew member.
- **(4)** No pilot shall operate a remotely piloted aircraft system unless the operation is conducted in accordance with the procedures referred to in subsection (1).

Site Survey

901.27 No pilot shall operate a remotely piloted aircraft system unless, before commencing operations, they determine that the site for take-off, launch, landing or recovery is suitable for the proposed operation by conducting a site survey that takes into account the following factors:

- **(a)** the boundaries of the area of operation;
- **(b)** the type of airspace and the applicable regulatory requirements;
- **(c)** the altitudes and routes to be used on the approach to and departure from the area of operation;
- **(d)** the proximity of manned aircraft operations;
- **(e)** the proximity of aerodromes, airports and heliports;
- **(f)** the location and height of obstacles, including wires, masts, buildings, cell phone towers and wind turbines;
- **(g)** the predominant weather and environmental conditions for the area of operation; and
- **(h)** the horizontal distances from persons not involved in the operation.

Operations at or in the Vicinity of an Aerodrome, Airport or Heliport

- **901.47 (1)** No pilot shall operate a remotely piloted aircraft at or near an aerodrome that is listed in the *Canada Flight Supplement* or the *Water Aerodrome Supplement* in a manner that could interfere with an aircraft operating in the established traffic pattern.
- **(2)** Subject to section 901.73 no pilot shall operate a remotely piloted aircraft at a distance of less than
 - **(a)** three nautical miles from the centre of an airport; and
 - **(b)** one nautical mile from the centre of a heliport.
- **(3)** No pilot shall operate a remotely piloted aircraft at a distance of less than three nautical miles from the centre of an aerodrome operated under the authority of the Minister of National Defence unless the operation is conducted in accordance with a special flight operations certificate — RPAS issued under section 903.03.

Records

- **901.48 (1)** Every owner of a remotely piloted aircraft system shall keep the following records:
 - **(a)** a record containing the names of the pilots and other crew members who are involved in each flight and, in respect of the system, the time of each flight or series of flights and
 - **(b)** a record containing the particulars of any mandatory action and any other maintenance action, modification or repair performed on the system, including
 - **(i)** the names of the persons who performed them,
 - **(ii)** the dates they were undertaken,
 - **(iii)** in the case of a modification, the manufacturer, model and a description of the part or equipment installed to modify the system, and
 - **(iv)** if applicable any instructions provided to complete the work.
- **(2)** Every owner of a remotely piloted aircraft system shall ensure that the records referred to in subsection (1) are made available to the Minister on request and are retained for a period of
 - **(a)** in the case of the records referred to in paragraph (1)(a), 12 months after the day on which they are created; and
 - **(b)** in the case of the records referred to in paragraph (1)(b), 24 months after the day on which they are created.
- **(3)** Every owner of a remotely piloted aircraft system who transfers ownership of the system to another person shall, at the time of transfer, also deliver to that person all of the records referred to in paragraph (1)(b).

ONTARIO

AERODROME/FACILITY DIRECTORY

TOTTENHAM / RONAN ON

CTR3

REF	N44 02 32 W79 50 47 2.1NW 10°W UTC-5(4) Elev 823' VTA A5000	
OPR	Mike & Cheryl Ronan 647-542-7700 Reg	
PF	C-1,2,3,4,5	
FLT PLN		
FIC	London 866-WXBRIEF (Toll free within Canada) or 866-541-4104 (Toll free within Canada & USA)	
SERVICES	Ltd hrs 1,4,5	
RWY DATA	Rwy 08(083°)/26(263°) 2033x150 GRASS	
RCR	Opr Ltd win maint	
COMM		
ATF	tfc 123.2 5NM 3500 ASL	
PRO	Rgt and left hand circuits Rwy 08/26 Apr-Dec (CAR 602.96). Powered acft use opposite circuit pattern to gliders.	
CAUTION	Extv glider activity. Ditch at west end of Rwy 26 btwn thld & road.	

ONTARIO

AERODROME/FACILITY DIRECTORY

TOTTENHAM / MARDON ON

CMA6

REF	N44 03 28 W79 52 48 3.7NW 10°W (2022) UTC-5(4) Elev 820' A1900 A5000	
OPR	Marvin Chantler 416-557-0655 Reg PPR	
PF	C-2 D-1,3,4,5,7	
FLT PLN		
FIC	London 866-WXBRIEF (Toll free within Canada) or 866-541-4104 (Toll free within Canada & USA)	
RWY DATA	Rwy 18(180°)/36(360°) 2000x85 GRASS Thld 18 displ 300'.	
RCR	Opr No win maint. Soft when wet.	
COMM		
ATF	tfc 123.2 5NM 3900 ASL	
PRO	P-lines, trees and windsock S of Rwy 36.	

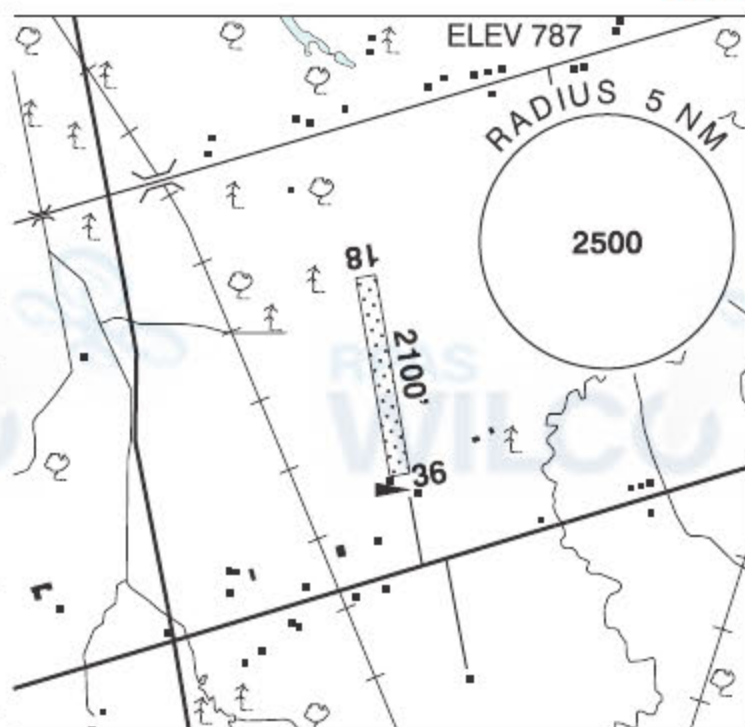
ONTARIO

AERODROME/FACILITY DIRECTORY

BEETON FIELD ON

CBF3

REF	N44 04 45 W79 48 38 1.1W 10°W (2020) UTC-5(4) Elev 787' VTA A5000
OPR	Terry Cleland 416-999-4037 Reg PPR
PF	C-1,2,3,4,5
FLT PLN	FIC London 866-WXBRIEF (Toll free within Canada) or 866-541-4104 (Toll free within Canada & USA)
RWY DATA	Rwy 18/36 2100x100 GRASS
RCR	Opr No win maint
COMM	ATF tfc 123.2 5NM 3800 ASL



ONTARIO

AERODROME/FACILITY DIRECTORY

TOTTENHAM / VOLK ON

CPM5

REF	N43 59 39 W79 46 43 2SE 10°W UTC-5(4) Elev 1020' VTA A5000	
OPR	Lisa Volk 416-318-1320 Reg Ltd hrs	
PF	B-1 C-2,3,4	
FLT PLN	FIC London 866-WXBRIEF (Toll free within Canada) or 866-541-4104 (Toll free within Canada & USA)	
SERVICES	Ltd hrs S 1,4,5	
RWY DATA	Rwy 16(171°)/34(351°) 3085x80 GRASS Thld 16 displ 281'. Thld 34 displ 225' Rwy 34 up 0.72%	
RCR	Opr Ltd win maint. Rwys soft when wet & dur thaw.	
COMM	ATF tfc 123.2 5NM 2500 ASL	
CAUTION	Marked P-lines 50 AGL 170' fr Thld 34. Acft not visible fr opposite ends of Rwy 16/34. Caution should be maintained dur all apchs & deps due to tall trees (50 AGL) and/or rising terrain in the immediate vic of all rwys. Blowing dust may be present due const activity on A/D.	

ONTARIO

AERODROME/FACILITY DIRECTORY

SCHOMBERG (SLOAN FIELD) ON**CSV8**

REF	N43 59 10 W79 43 38 2WSW 11°W (2011) UTC-5(4) Elev 890' VTA A5000	<p>The chart shows a runway oriented 110°/290° with a length of 2400 feet. A 5NM radius circle is centered on the runway. The elevation is 890 feet. The chart also shows various navigational aids and terrain features.</p>
OPR	Gord Sloan 416-464-7384 Reg PPR	
PF	C-1,2,3 D-4,5,6	
FLT PLN		
FIC	London 866-WXBRIEF (Toll free within Canada) or 866-541-4104 (Toll free within Canada & USA)	
RWY DATA	Rwy 11(110°)/29(290°) 2400x30 GRASS	
RCR	Opr Ltd win maint. Rwy soft in spring and when wet.	
COMM		
ATF	tfc 123.2 3NM 3900 ASL	
CAUTION	P-lines buried W, trees W of strip 50 AGL.	